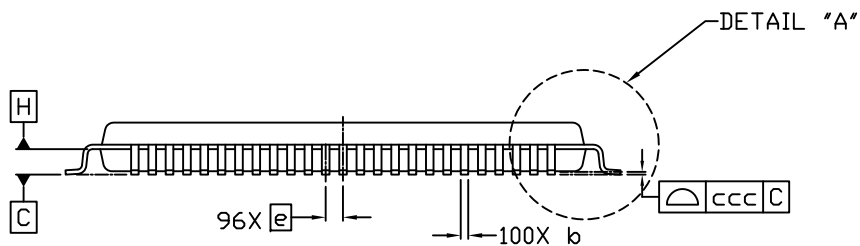
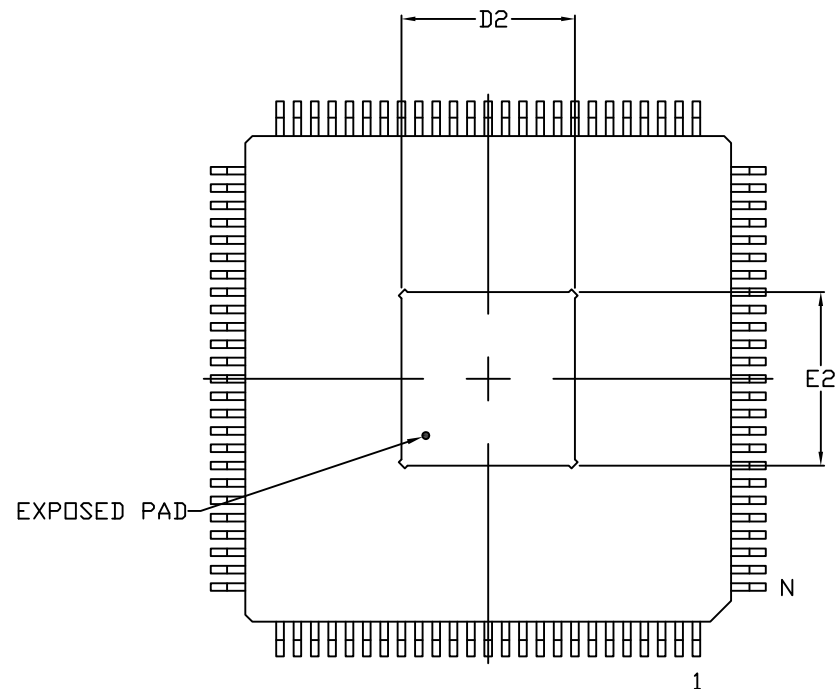


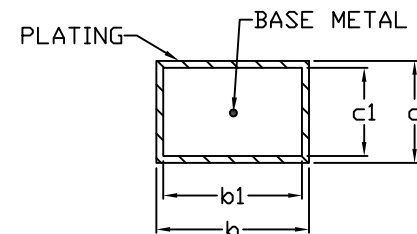
TOP VIEW



SIDE VIEW



BOTTOM VIEW



SECTION A-A



TITLE:
PACKAGE OUTLINE, 100L LQFP,
14X14X1.4 MM BODY, W/ EXPOSED PAD

APPROVAL

DOCUMENT CONTROL NO.
21-100034

REV.
A

1/2

-DRAWING NOT TO SCALE-



SYMBOL	COMMON DIMENSIONS		
	MIN.	NOM.	MAX.
A	---	---	1.60
A ₁	0.05	---	0.15
A ₂	1.35	1.40	1.45
b	0.17	0.22	0.27
b1	0.17	0.20	0.23
c	0.09	---	0.20
c1	0.09	---	0.16
D	16.00 BSC		
E	16.00 BSC		
D1	14.00 BSC		
E1	14.00 BSC		
D2	4.90	5.00	5.10
E2	4.90	5.00	5.10
e	0.50 BSC		
L	0.45	0.60	0.75
L1	1.00 REF.		
θ	0°	3.5°	7°
θ1	0°	---	---
aaa	0.20		
bbb	0.20		
ccc	0.08		
ddd	0.08		
eee	0.05		

1. ALL DIMENSIONS ARE IN MILLIMETERS (ANGLES IN DEGREES) UNLESS OTHERWISE SPECIFIED..
2. DIMENSIONING & TOLERANCES PER ASME, Y14.5M-2009.
3. DATUM A, B AND D TO BE DETERMINED AT DATUM PLANE H.
4. DIMENSION D AND E TO BE DETERMINED AT SEATING PLANE C.
5. DIMENSIONS D1 AND E1 DO NOT INCLUDE MOLD PROTRUSION. ALLOWABLE PROTRUSION IS 0.25 PER SIDE. DIMENSIONS D1 AND E1 DO INCLUDE MOLD MISMATCH AND ARE DETERMINED AT DATUM PLANE DATUM H.
6. DIMENSION b DOES NOT INCLUDE DAM BAR PROTRUSION. ALLOWABLE DAM BAR PROTRUSION SHALL NOT CAUSE THE LEAD WIDTH TO EXCEED THE MAXIMUM b DIMENSION BY MORE THAN 0.08 mm. DAM BAR CANNOT BE LOCATED ON THE LOWER RADIUS OR THE FOOT. MINIMUM SPACE BETWEEN PROTRUSION AND AN ADJACENT LEAD IS 0.07 mm.
7. 'N' REFER TO NUMBER OF LEADS.
8. DETAILS OF PIN 1 IDENTIFIER ARE OPTIONAL BUT MUST BE LOCATED WITHIN THE ZONE INDICATED.
9. MARKING SHOWN IS FOR PACKAGE ORIENTATION REFERENCE ONLY.
10. MATERIAL MUST COMPLY WITH BANNED AND RESTRICTED SUBSTANCES SPEC #10-0131.
11. ALL DIMENSIONS APPLY TO PbFREE (+) PKG. CODES.
12. PACKAGE CODE: C100LE+1



TITLE:
PACKAGE OUTLINE, 100L LQFP,
14X14X1.4 MM BODY, W/ EXPOSED PAD

APPROVAL

DOCUMENT CONTROL NO.	21-100034
----------------------	-----------

REV.	
------	--

2	2
---	---

-DRAWING NOT TO SCALE-