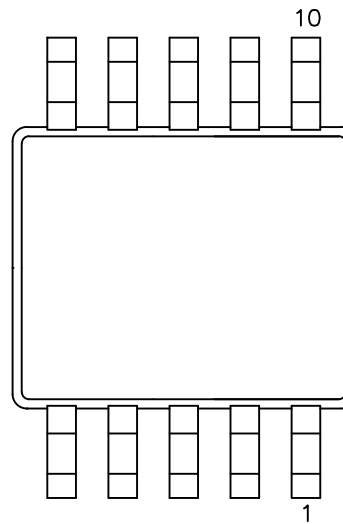
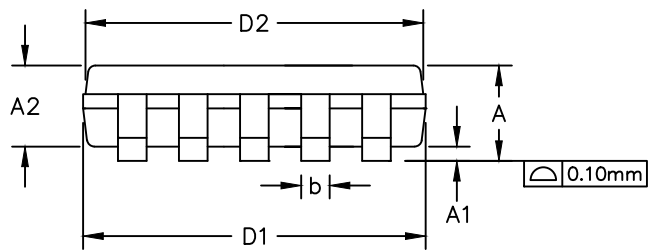


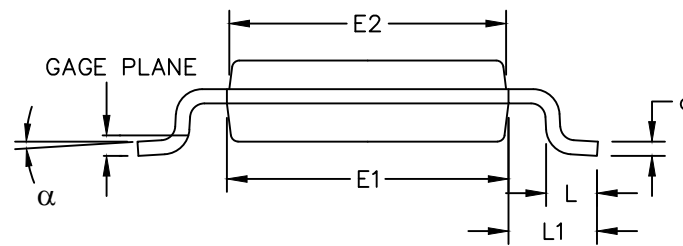
TOP VIEW



BOTTOM VIEW



FRONT VIEW



SIDE VIEW

-DRAWING NOT TO SCALE-



TITLE:  
PACKAGE OUTLINE, 10L uMAX/uSOP

APPROVAL

DOCUMENT CONTROL NO.  
21-0061

REV. P 1/2


DIM	INCHES		MILLIMETERS	
	MIN	MAX	MIN	MAX
A	—	0.043	—	1.10
A1	0.002	0.006	0.05	0.15
A2	0.030	0.037	0.75	0.95
D1	0.116	0.120	2.95	3.05
D2	0.114	0.118	2.89	3.00
E1	0.116	0.120	2.95	3.05
E2	0.114	0.118	2.89	3.00
H	0.187	0.199	4.75	5.05
L	0.0157	0.0275	0.40	0.70
L1	0.037 REF		0.940 REF	
b	0.007	0.0106	0.177	0.270
e	0.0197 BSC		0.500 BSC	
c	0.0035	0.0078	0.090	0.200
S	0.0196 REF		0.498 REF	
$\alpha$	0°	6°	0°	6°
Pkg Codes: U10CN-1; U10+5; U10M-5; U10-6C				

DIM	INCHES		MILLIMETERS	
	MIN	MAX	MIN	MAX
D1	0.107	0.124	2.73	3.16
D2	0.108	0.124	2.75	3.14
E1	0.109	0.122	2.78	3.11
E2	0.109	0.123	2.77	3.12
Pkg Codes: U10-2; U10-2C				

NOTES:

1. D&E DO NOT INCLUDE MOLD FLASH.
2. MOLD FLASH OR PROTRUSIONS NOT TO EXCEED 0.15mm (.006").
3. CONTROLLING DIMENSION: MILLIMETERS.
4. COMPLIES TO JEDEC MO-187, LATEST REVISION, VARIATION BA.
5. MARKING SHOWN IS FOR PKG. ORIENTATION ONLY.
6. ALL DIMENSIONS APPLY TO BOTH LEADED (-) AND PbFREE (+) PKG. CODES.

-DRAWING NOT TO SCALE-

 <b>maxim integrated</b>			
TITLE: PACKAGE OUTLINE, 10L uMAX/uSOP			
APPROVAL	DOCUMENT CONTROL NO. 21-0061	REV. P	2/2