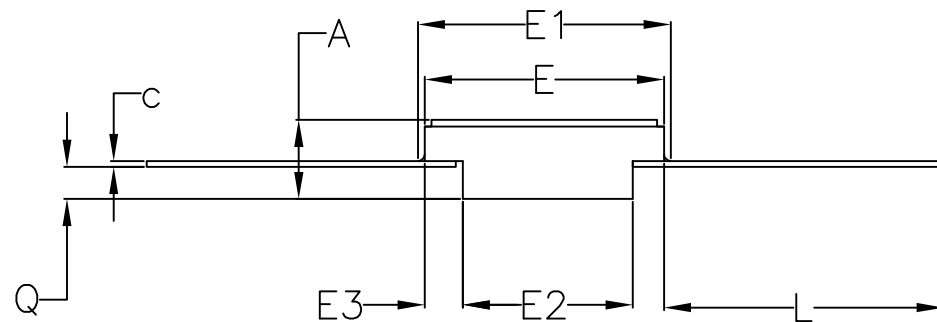


DIM	INCHES		MILLIMETERS	
	MIN	MAX	MIN	MAX
A	0.045	0.115	1.14	2.92
b	0.015	0.022	0.38	0.56
c	0.004	0.009	0.10	0.23
D	---	0.440	---	11.18
E	0.245	0.285	6.22	7.24
E1	---	0.315	---	8.00
E2	0.130	---	3.30	---
E3	0.030	---	0.76	---
e	0.050	BSC	1.27	BSC
L	0.250	0.370	6.35	9.40
Q	0.026	0.045	0.66	1.14
s1	0.005	---	0.13	---
S	---	0.045	---	1.14



NOTES:

1. ALL DIMENSIONS ARE IN INCHES UNLESS OTHERWISE SPECIFIED.
2. MATERIAL MUST COMPLY WITH BANNED AND RESTRICTED SUBSTANCES SPEC #10-0131.
3. ALL DIMENSIONS APPLY BOTH TO LEAD FREE (+) & LEADED (-) PKG.CODES.
4. MEETS MIL STD 1835 F-5A CONFIGURATION B
5. PACKAGE CODE: F16-3



TITLE:
PACKAGE OUTLINE, 16L FLATPACK

APPROVAL
EDEN CHEN
04/12/11

DOCUMENT CONTROL NO.
21-0013

REV.
C 1/1

-DRAWING NOT TO SCALE-