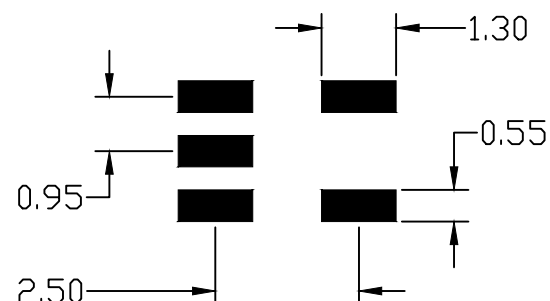


PKG. CODES
[U5+1]
[U5+2]
[U5+1A]
[U5+2A]
[U5+2C]



NOTES:

1. REFERENCE PKG. OUTLINE: 21-0057.
2. LAND PATTERN COMPLIES TO: IPC7351A.
3. TOLERANCE: ± 0.02 MM.
4. ALL DIMENSIONS APPLY TO BOTH LEADED (-) AND PbFREE (+) PKG. CODES.
5. ALL DIMENSIONS IN MM.

—DRAWING NOT TO SCALE—



This document (including dimensions, notes & specs) is a recommendation based on typical circuit board manufacturing parameters. Since land pattern design depend on many factors unknown to Analog Devices Inc. (eg. user's board manufacturing specs), user must determine suitability for use. This document is subject to change without notice.
Contact technical support at <http://www.maxim-ic.com/support> for further questions.

TITLE:
PACKAGE LAND PATTERN,
[U5] 5L SOT23

APPROVAL
ROHINI KESAVAN

DOCUMENT CONTROL NO.
90-0174

REV. D 1/1