



[Maxim](#) > [Design Support](#) > [Technical Documents](#) > [Application Notes](#) > [Sensors](#) > APP 1889

Keywords: high performance, low cost, signal conditioner, precision sensor signal conditioner, digital signal conditioner, PRT sensor compensation, thick film, thin film, sensor compensation, strain gauge sensor compensation

APPLICATION NOTE 1889

The MAX1463EVKIT Setup and Functional Verification

By: Youssef Fathi

Feb 18, 2003

Abstract: The MAX1463 is a highly integrated, low power, two-channel sensor signal processor optimized for industrial and process control applications such as pressure sensing, RTD and thermal-couple linearization, weight sensing, and remote process monitoring with limit indication.

The MAX1463 accommodates sensors with outputs ranging from 1mV/V to 1V/V. It includes two 16-bit output DACs, two 12-bit PWM outputs, and supports 4mA–20mA output. It incorporates a 16-bit CPU, 4Kb of program and 128 bytes of user flash memory.

The following procedure will guide you to set up the MAX1463 hardware/software and verify that it is functioning correctly.

Hardware Requirements

- Microsoft® Windows 98 or higher.
- 32MB of RAM.
- 20MB of hard disk.
- One parallel port.

EV board Configuration

- See the MAX1463 evaluation board diagram in **Figure 1**.
- Configure the EV board jumpers per **Table 1**

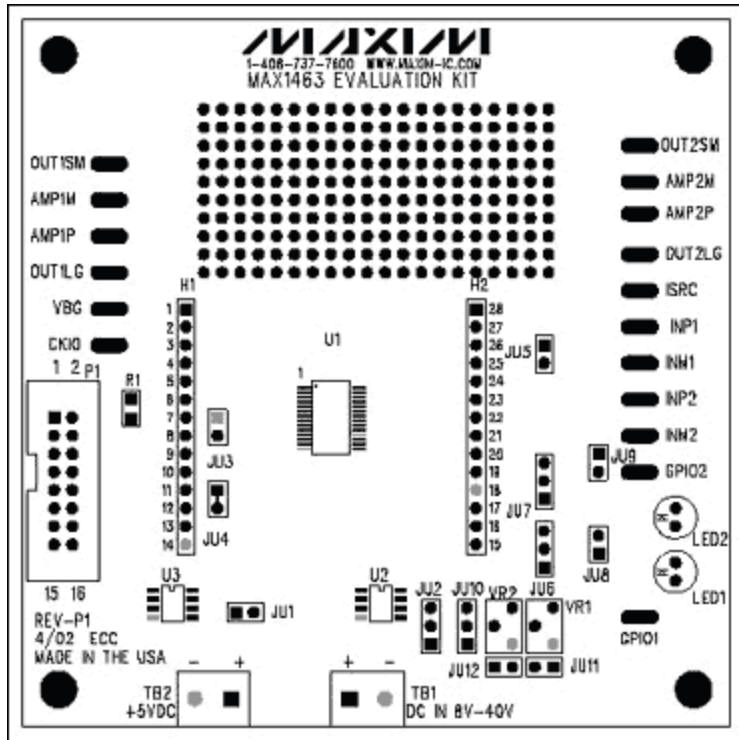


Figure 1. The MAX1463 evaluation board.

Table 1. EV Board Jumpers Configuration

JU1	SHORT	Power Supply Selection	Unregulated external +8VDC to +40VDC.
JU2	SHORT Pin 1-2	V _{REF} Selection	Internal V _{REF} . Pin-1 is at the bottom.
JU3	OPEN	Clock Selection	Internal Oscillator
JU4	SHORT (shorted)	Communication Interface	3-Wire Communication Interface. Cut wire to open.
JU5	OPEN	ISRC pin Configuration	ISRC pin floating.
JU6	OPEN	GPIO1 Mode	Logic level = 0
JU7	OPEN	GPIO2 Mode	Logic level = 0
JU8	SHORT	LED1 Configuration	LED1 driven by GPIO1.
JU9	SHORT	LED2 Configuration	LED2 driven by GPIO2.
JU10	OPEN	Bridge Voltage Drive Selection	Bridge Voltage connected to +5VDUT. Pin 1 is at the bottom.
JU11	OPEN	INP1 Configuration	INP1 floats.
JU12	OPEN	INM1 Configuration	INM1 floats.

Hardware Connection

- Set up the system per **Figure 2**.
- Connect the DMM. The terminals are connected between the VSS (pin 14) and any pin you wish to measure. For example: small op-amp; large op-amp; Channel-1... etc.

- Connect one end of the 16-pin ribbon cable between the 16-pin headers on the EV board and the communication KEY. Please make sure the pin-1 of the ribbon cable is connected to the pin-1 of the boards.
- Apply 9V supply to the TB1 terminal block.
- Connect the 25-pin connector of the KEY to the computer parallel port. Any available parallel port is acceptable.

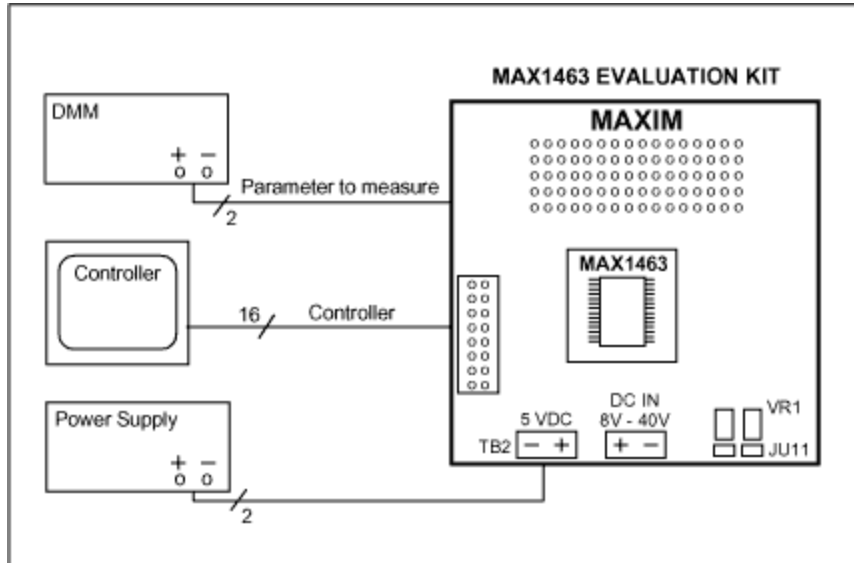


Figure 2. Hardware connection.

Software Installation

- Insert the MAX1463 CD in the CD drive.



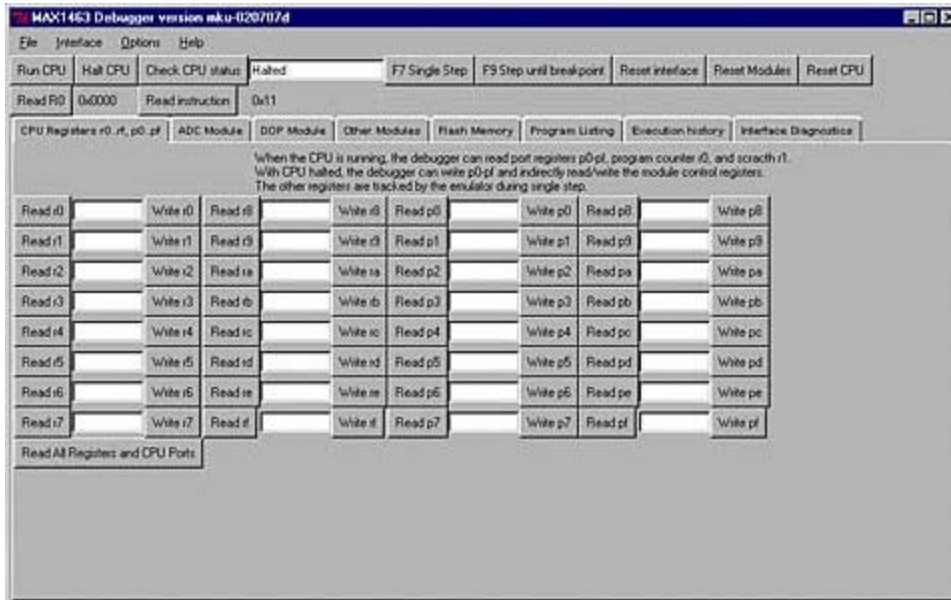
- Install ASM1463 in your computer. The default destination directory is "C:\MAX1463". The

destination directory can be changed as desired.

- The MAX1463 control software and supporting files will be stored in the specified directory.

System Verification

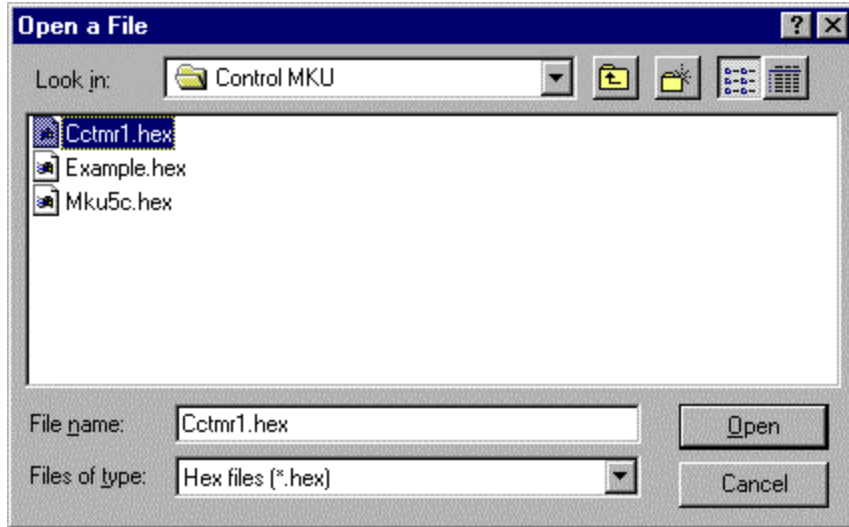
- Run the "Hardware Debugger":
"Start/Programs/Maxim MAX1463 Evaluation Kit/Hardware Debugger"



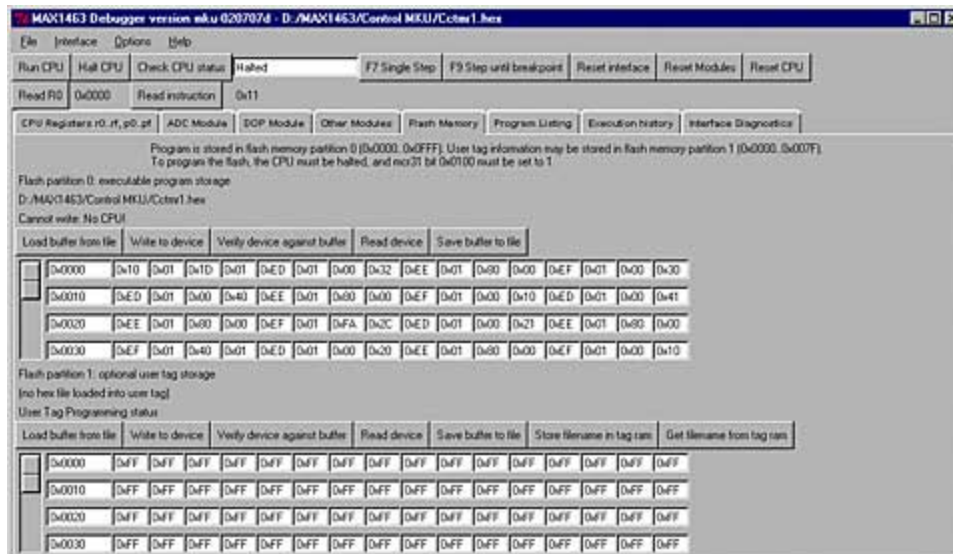
- Press function-key F9 or select the "Flash Memory" tab.



- From "Flash Position 0" block of the window, press the "Load buffer from file" button. An open file window will appear that will include the following files. Select the "Ccmtr1.hex" and press Open.



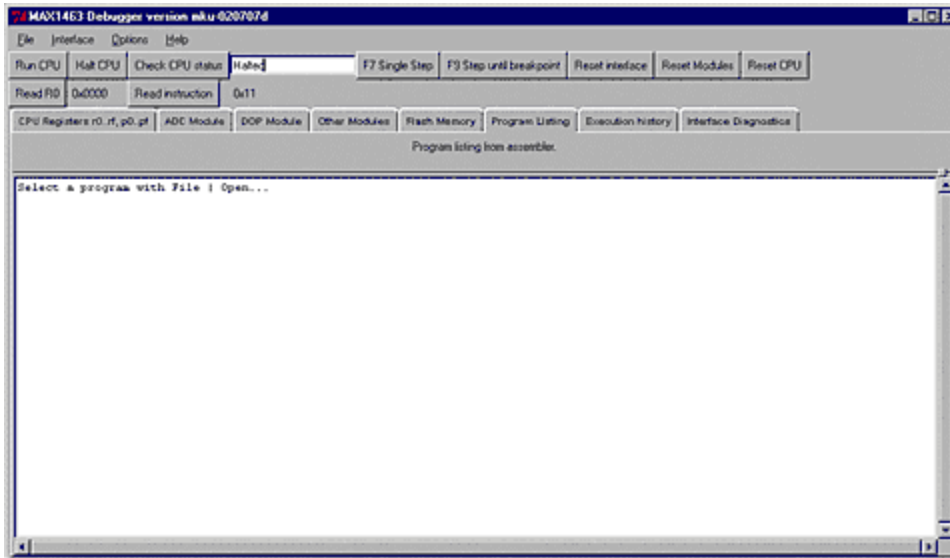
- From "Flash Position 0" block of the window, press the "Write to device" button. At completion, "Programming complete" statement will be displayed.



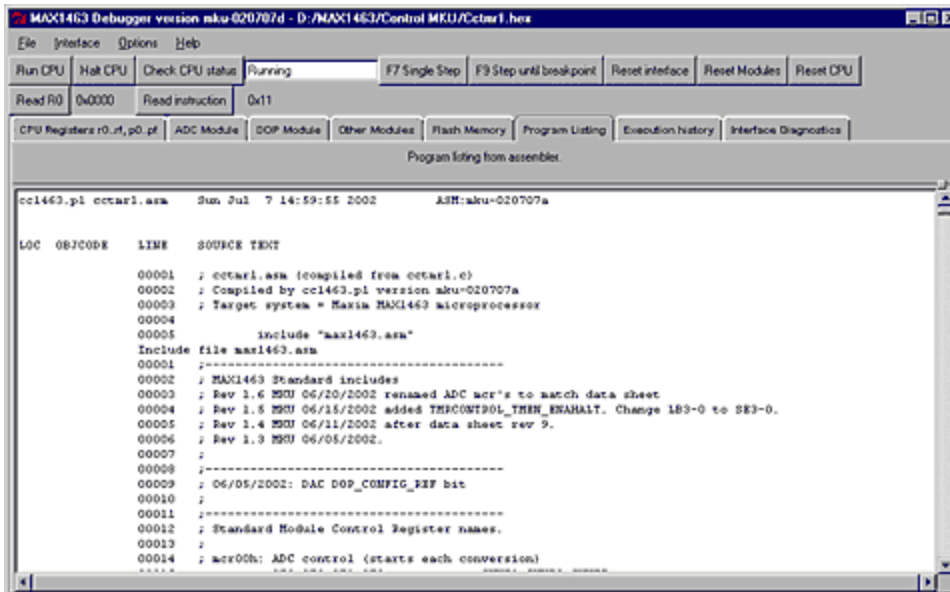
- From "Flash Position 0" of the window, press the "Verify device against buffer". The program will read the content of the flash memory (what you just wrote) and compare that with the buffer (what you intended to write). At completion, "Verify complete" will be displayed. In case of failure, a "mismatch..." message will be displayed along with the address of the memory location where the mismatch was found.
- Press "Reset CPU"
- Press "Run CPU".
The red LEDs on the EV board will start flashing.
The blinking LEDs confirm that the software installation was successful, you have proper hardware setup, and the EVKIT is working.
- Press "Halt CPU".
The LEDs will stop blinking.

View Program Listing

- Select the "Program Listing" tab



- From the directory you installed the MAX1463 programs, Open the "Cctmr1.lst" listing with File | Open...



- You may roll the side bar up and down in order to view the entire program listing.

Microsoft is a registered trademark and registered service mark of Microsoft Corporation.

Related Parts

[MAX1463](#)

Low-Power, Two-Channel Sensor Signal Processor

More Information

For Technical Support: <http://www.maximintegrated.com/support>

For Samples: <http://www.maximintegrated.com/samples>

Other Questions and Comments: <http://www.maximintegrated.com/contact>

Application Note 1889: <http://www.maximintegrated.com/an1889>

APPLICATION NOTE 1889, AN1889, AN 1889, APP1889, Appnote1889, Appnote 1889

Copyright © by Maxim Integrated Products

Additional Legal Notices: <http://www.maximintegrated.com/legal>