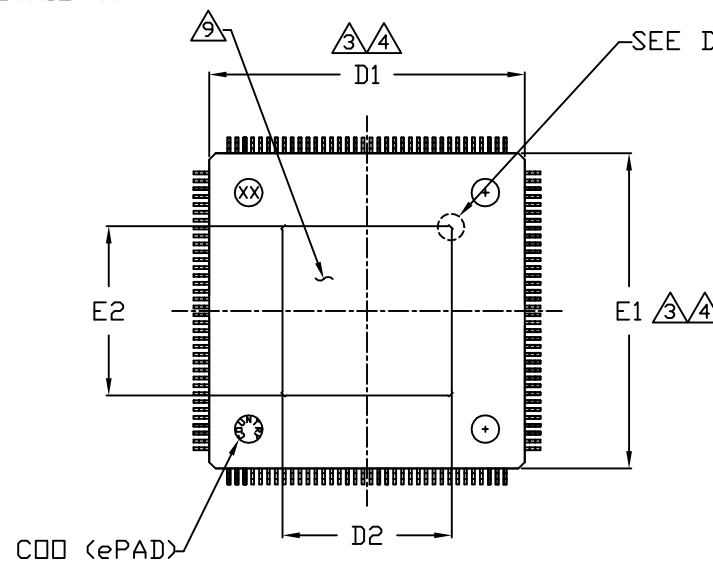
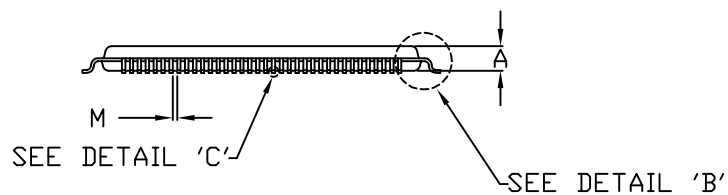


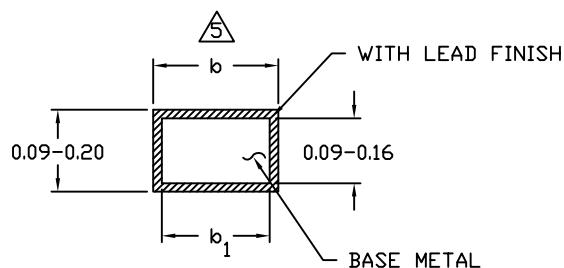
TOP VIEW



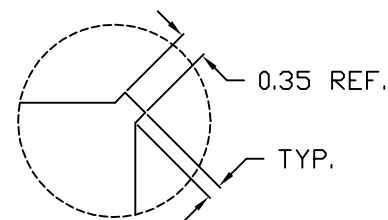
BOTTOM VIEW



SIDE VIEW

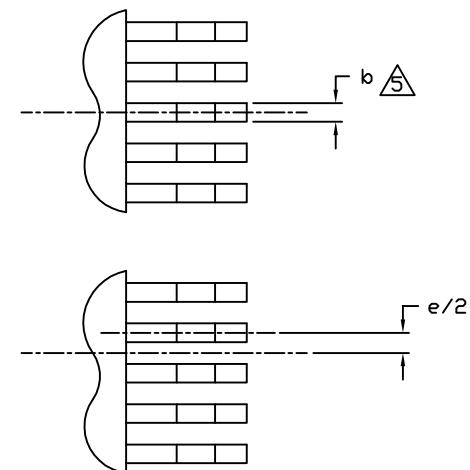


DETAIL C

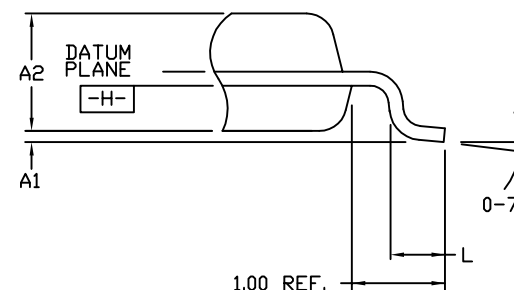


DETAIL "D"
(EXPOSED PAD CORNER DETAIL)

EVEN LEAD SIDES



DETAIL "A"



DETAIL "B"



TITLE:
PACKAGE OUTLINE,
144L LQFP 20x20x1.4mm, EXPOSED PAD

APPROVAL
RAMON DE LEON
12/14/09

DOCUMENT CONTROL NO.
21-0300

REV. 1/2
B

-DRAWING NOT TO SCALE-

NOTES:

1. ALL DIMENSIONING AND TOLERANCES CONFIRM TO ASME Y14.5-1982.
2. DATUM PLANE [H] LOCATED AT MOLD PARTING LINE AND COINCIDENT WITH LEAD, WHERE LEAD EXITS PLASTIC BODY AT BOTTOM OF PARTING LINE.
3. DIMENSIONS D1 AND E1 DO NOT INCLUDE MOLD PROTRUSION. ALLOWABLE MOLD PROTRUSION IS 0.254 MM PER SIDE.
4. PACKAGE TOP DIMENSIONS ARE SMALLER THAN THE BOTTOM BY 0.15 MILLIMETERS.
5. DIMENSION b DOES NOT INCLUDE DAMBAR PROTRUSION. ALLOWABLE DAMBAR PROTRUSION SHALL BE 0.08mm TOTAL IN EXCESS OF THE b DIMENSION AT MAXIMUM MATERIAL CONDITION.
6. ALL DIMENSIONS ARE IN MILLIMETERS UNLESS OTHERWISE SPECIFIED.
7. THIS OUTLINE CONFORMS TO JEDEC PUBLICATION 95 REGISTRATION MS-026.
8. LEADS SHALL BE COPLANAR WITHIN 0.08mm.
9. THE EXPOSED PAD IS COINCIDENT WITH THE TOP OR BOTTOM AND NOT ALLOWED TO PROTRUDE BEYOND THAT SURFACE.
10. MATERIAL MUST COMPLY WITH BANNED AND RESTRICTED SUBSTANCES SPEC# 10-0131
11. ALL DIMENSIONS APPLY TO BOTH LEADED (-) AND PbFREE (+) PKG. CODES.

S Y M B O L	DIMENSIONS	
	MIN.	MAX.
A	-	1.60
A ₁	0.05	0.15
A ₂	1.35	1.45
D	21.80	22.20
D ₁	19.80	20.20
D ₂	9.95	11.52
E	21.80	22.20
E ₁	19.80	20.20
E ₂	9.95	11.52
L	0.45	0.75
M	0.11	-
N	144	
e	0.50 BSC.	
b	0.17	0.27
b1	0.17	0.23
PKG CODE	C144LE-3	



TITLE:
PACKAGE OUTLINE,
144L LQFP 20x20x1.4mm, EXPOSED PAD

APPROVAL
RAMON DE LEON
12/14/09

DOCUMENT CONTROL NO.
21-0300

REV.
B

2/2

-DRAWING NOT TO SCALE-